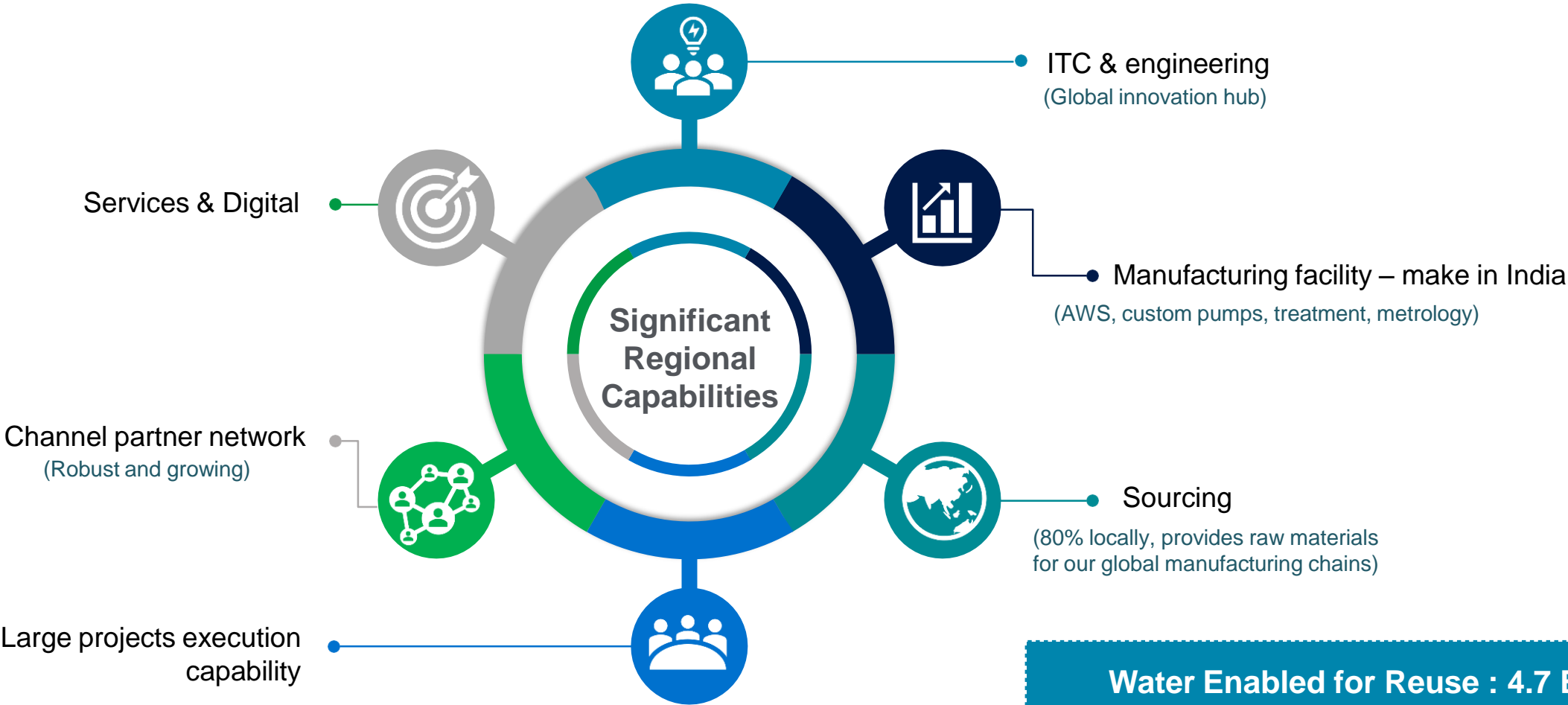


# Solving water with Decision Intelligence & Smart Water Ecosystem

Sham Chaudhari  
Director – Analytics, Assessment Service & Digital Solution



Leading water technology company with 22000 (1000 in India) employee & revenue \$ 7.2 B



Water Enabled for Reuse : 4.7 B m3

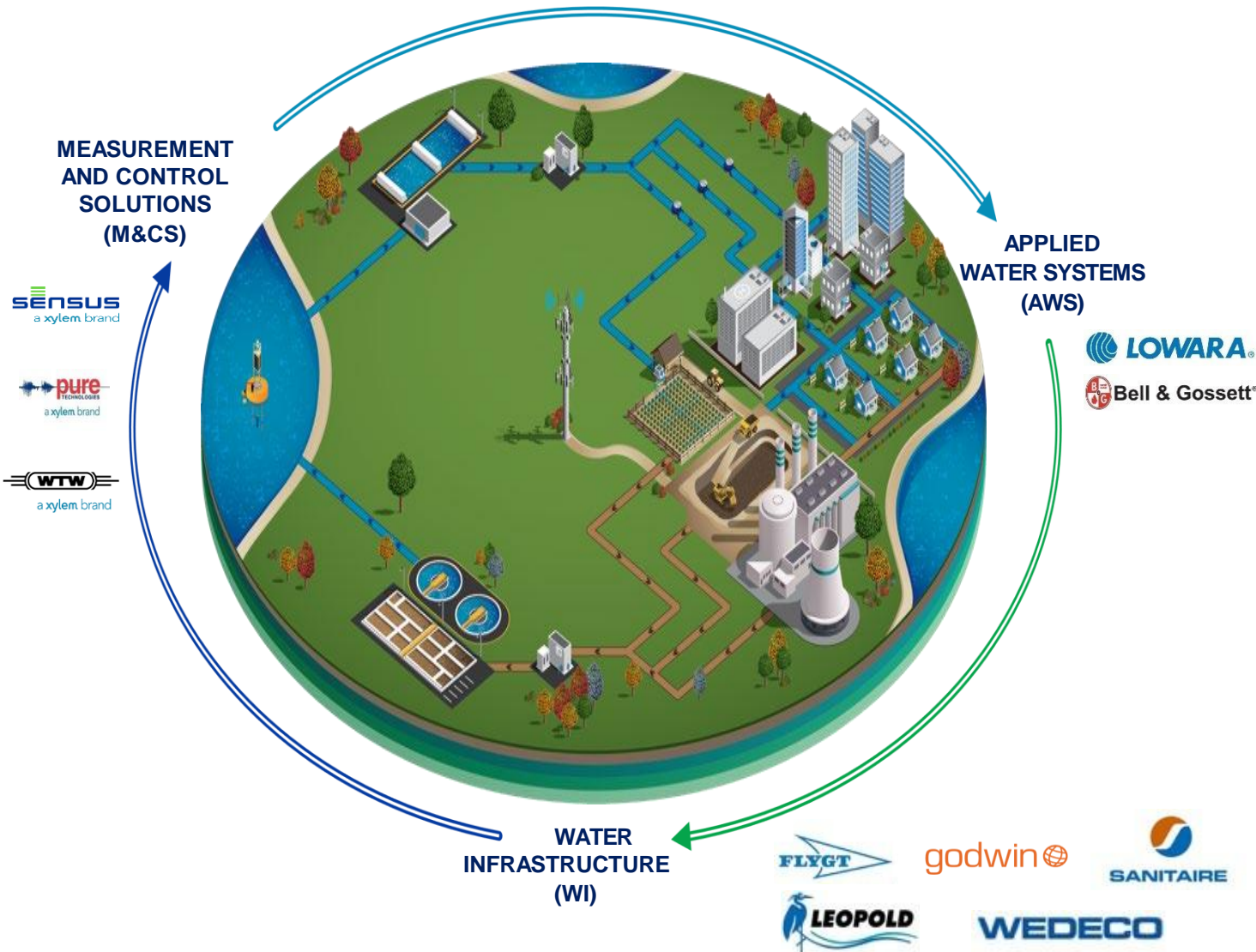


xylem +  evoQUA

Evoqua joins Xylem



# Comprehensive Solutions Across the Water Cycle



## Solutions Overview

WI

40%

Custom pumps for transport of water and wastewater, Dewatering pumps in emergencies, Filtration, SBR, ultraviolet, and ozone systems

Success stories :

Kaleshwaram lift irrigation project, > 50 large STPs in India, UV in Rashtrapati Bhavan



AWS

30%

Pumps, IOT solutions, control panels, accessories for HVAC, Fire protection and plumbing systems

Success stories :

DJB, Delhi Metro, Airports, Central Vista, Statue of unity, Major hotels like ITC, Hyatt, Commercial offices – IBM, TCS, WIPRO



M & CS

30%

Smart metering, Analytics, Assessment & Optimization

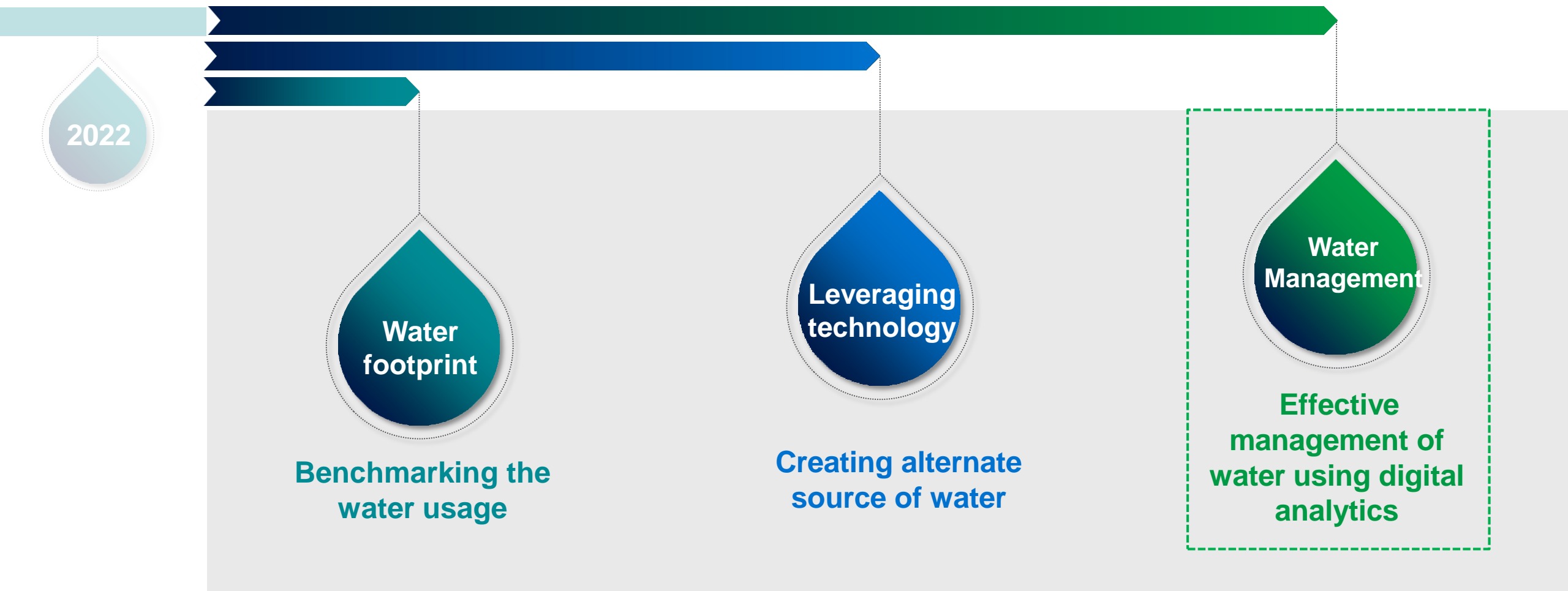
Success stories :

Smart metering at PMC, Water quality monitoring at Chilka, Analytics at Reliance (multiple places), BPCL





# Solving water with Decision intelligence



AGING WATER INFRASTRUCTURE, INCREASING OPERATIONAL COSTS, AND REDUCING WATER REVENUE



# Water Technology Company

spanning the entire water cycle





# Track & Transform : Your need !

## WHAT Customers Want From Digital

Compliance

Cost savings

Risk reduction

Sustainability

## What We provide

Transport & treatment

Sensor & smart  
metering

Communication

Measurement

Data analytics

Reducing water loss, improving performance, lowering costs and providing great customer service while ensuring water safety, affordability and resiliency.



# DECISION INTELLIGENCE

Getting to transformative change is hard when you're faced with tough everyday choices. Xylem delivers the digital insight you need to make better, data-informed decisions throughout your wastewater and water networks today — so you can begin to realize new ways to solve water for tomorrow.





# From intake to effluent, we can help

Xylem delivers holistic impact to the entire water cycle.

**WATER TREATMENT PLANTS**  
Make better decisions in real-time and reduce risks of unplanned incidents

**WATER DISTRIBUTION SYSTEMS**  
Manage real losses and gain real-time operational awareness

**METERING AND REVENUE**  
Ensure financial resiliency to keep revenue flowing

**COLLECTION SYSTEMS**  
Detect blocks and forecast flows, prioritize capital improvement plan to ensure reliability and best value for investments

**WASTEWATER TREATMENT PLANTS**  
Reduce costs by maximizing energy and chemical consumption while increasing margins of compliance

**WASTEWATER ASSETS**  
Coordinated control of pump stations, lift stations, tanks, tunnels, high-rate treatment; manage water capacity in real-time leading to optimized capex spend





# Delivering Outcomes with Decision Intelligence

## DATA SOURCES SPECIFIC TO YOUR SYSTEM:

- GIS
- Work & Maintenance
- Hydraulic Models
- SCADA
- Pressure & Acoustic Sensors
- AMI Meter Data
- Financial
- Public Data
- Weather Feed
- Additional Meters & Sensors

## REAL-TIME DECISION SUPPORT SYSTEM

Ingest all data, using our Digital Solutions and expert-led project delivery and management.

### WASTEWATER NETWORK OPTIMIZATION



### TREATMENT SYSTEM OPTIMIZATION



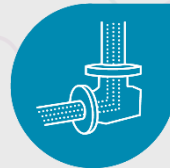
### REVENUE LOCATOR



### WATER LOSS MANAGEMENT



### ASSET PERFORMANCE OPTIMIZATION



## ENTERPRISE-LEVEL OPTIMIZATION

To deliver outcomes throughout the water cycle.

### CAPEX REDUCTION



### SYSTEM OPTIMIZATION



### OPEX REDUCTION



### NON-REVENUE WATER



### REGULATORY COMPLIANCE



### ASSET RELIABILITY





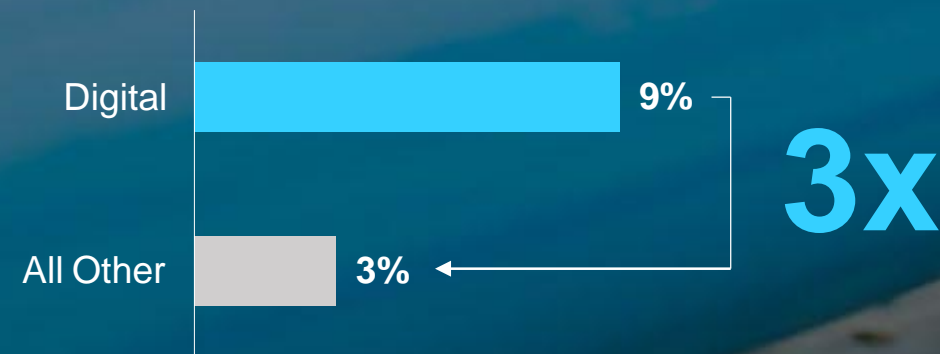
# Our Customers Are Turning to Digital Solutions to Close the Gap

Digital Helps Customers Achieve Sizable Savings...

**\$70B** POTENTIAL ANNUAL SAVINGS FROM DIGITAL<sup>1</sup>

...Resulting in 3x Faster Growth

Water Utility Spending CAGR<sup>1</sup> (2020-2025)



Wastewater pumping energy reduced by **>50% ANNUALLY**

Aeration energy usage reduced by **26%**

Overflow volumes reduced by **247M GAL. ANNUALLY**

Workforce efficiency increased **75% during COVID-19**



# Welcome to the next revolution of inline leak detection and pipe conditional assessment technology !

---



Revolutionary product



Aligned with your needs &  
our sustainability goal



Our Best ever



# SmartBall

Free swimming inspection platform





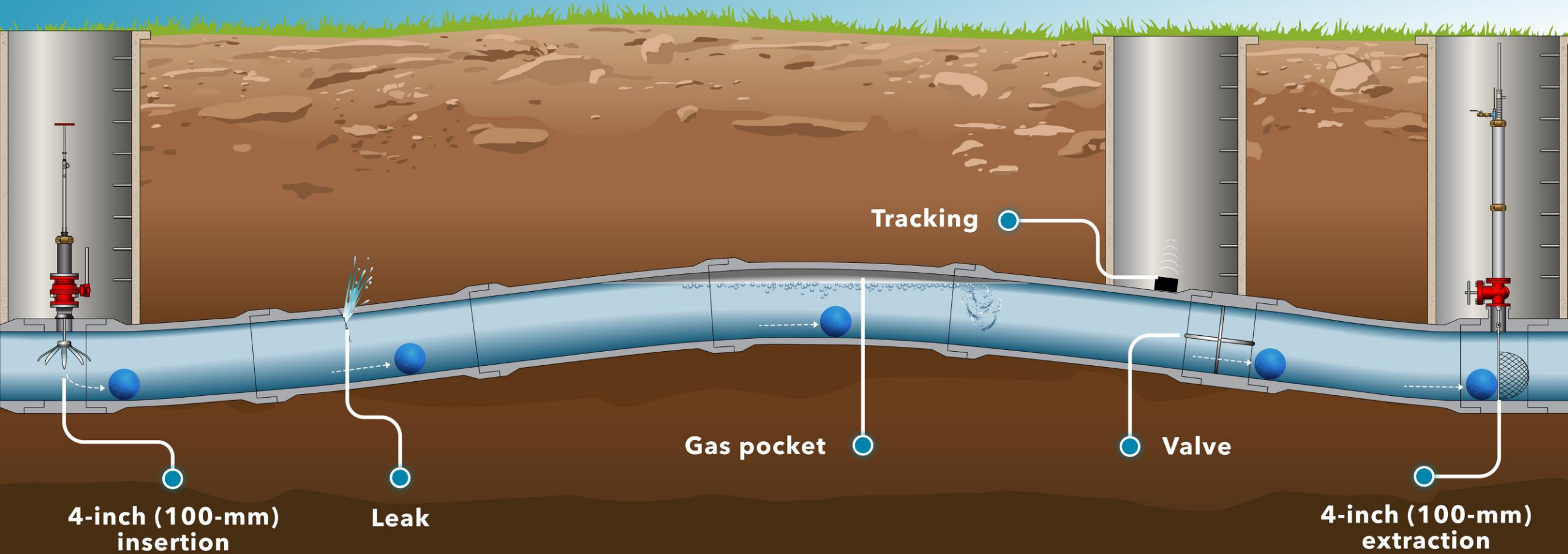




# SmartBall®

Free-Swimming Inspection Platform for Leak and  
Gas Pocket Detection and Pipeline Mapping

xylem  
Let's Solve Water





# Landmark Project : NRW reduction at Reliance

## Project details

### Background

- Reliance is drawing from Sea for their process applications
- To utilize the greatest amount of water while preventing water loss due to leaks and detecting air pockets

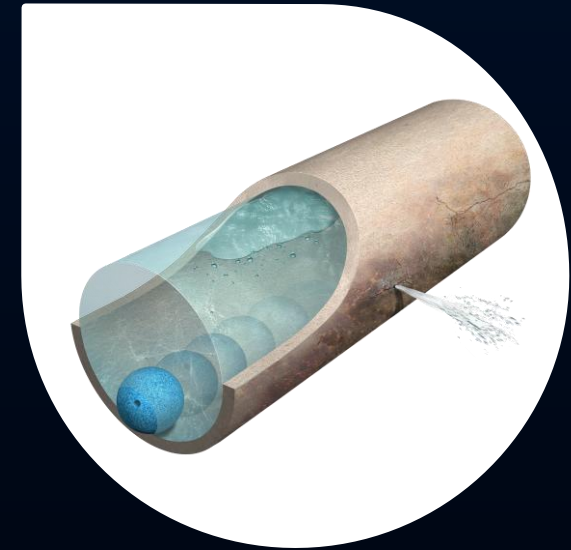
### Impact

- Identification of leaks, gas pockets and reducing NRW by SmartBall



## Advanced Technologies

The 1500-millimeter, 9800 m<sup>3</sup>/hr Sea Water Transmission Main of length 14 km was inspected with a SmartBall







We have an opportunity of a lifetime to Solve Water  
**TOGETHER**

Email id : **[Sham.Chaudhari@xylem.com](mailto:Sham.Chaudhari@xylem.com)**



# Thank You



**OPPORTUNITY  
OF A LIFETIME**